



Presenting Your Basset Hound!

Presented by the
Basset Hound Club of America
Breeders/Members
Education Committee

in conjunction with

Basset Hound
University



**How do we do a
better job?**



**How do we turn
turkey dinner....**



Into this delicious Thanksgiving Feast?



How do we turn this?



Into this?



Newbies & more experienced handlers



**Come away with a fresh
perspective.**



**Showing our dogs in their best light
requires a good understanding of our
breed.**



**You must understand attributes
and faults of your dog and those
you are competing with.**



Hard work and dedication,



**putting in the time and effort to
not only train your dog,**



But to condition and groom it properly will pay off.



**Don't expect to beat others by
throwing your dog in the tub the
night before the show.**



Take the time to hone your handling skills.



Before we go further,



**Let's start with a refresher
on the AKC Breed Standard.**



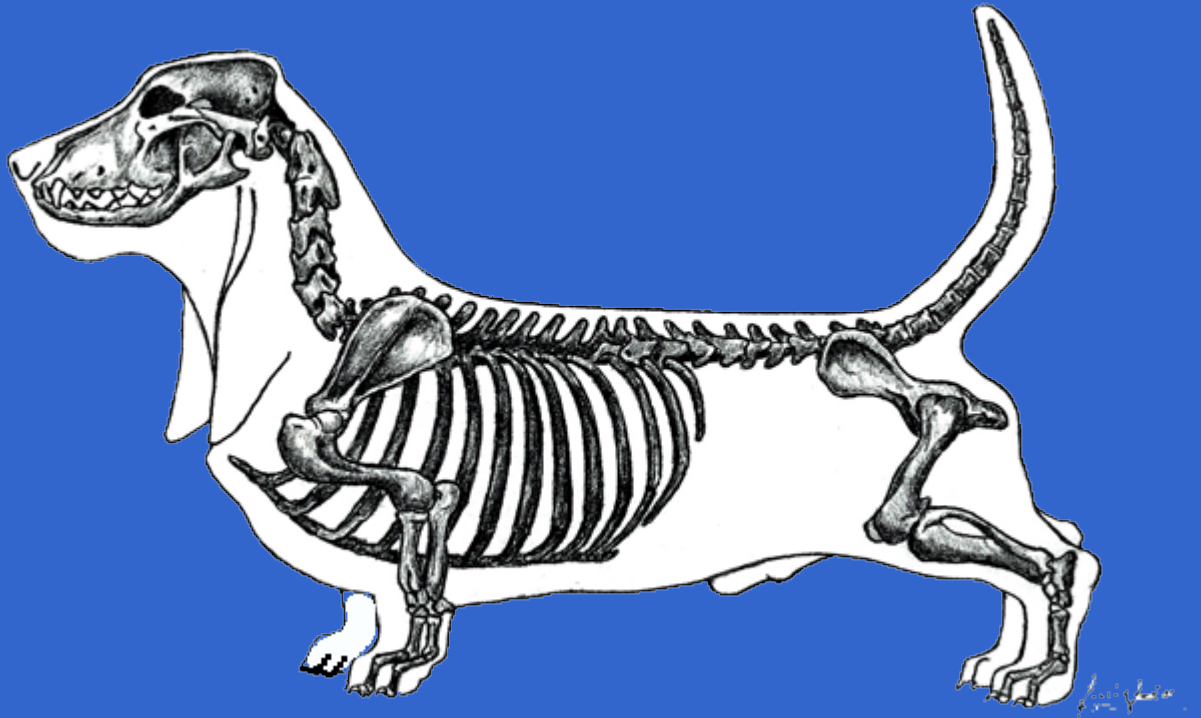
But wait!



**If you don't know all the parts,
how do you understand the
AKC Breed Standard?**

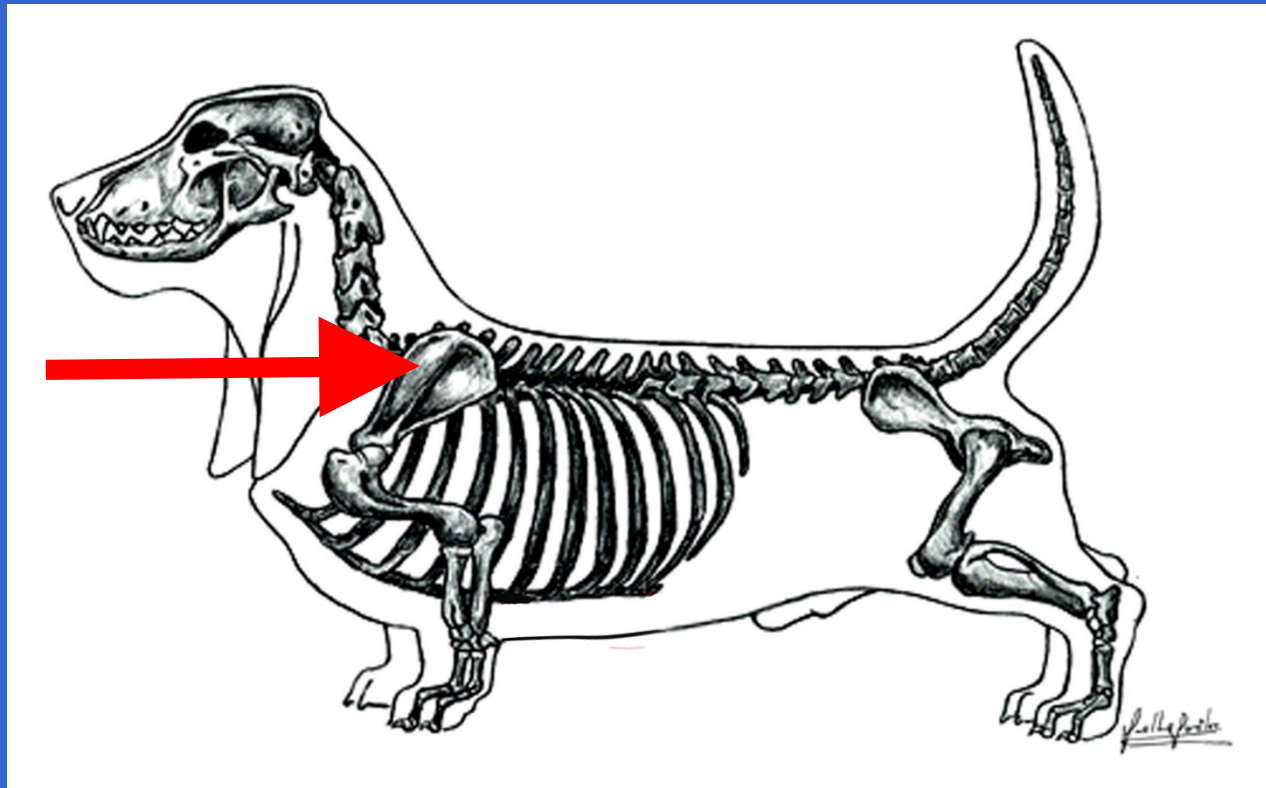


**Let's start with an
anatomy refresher!**



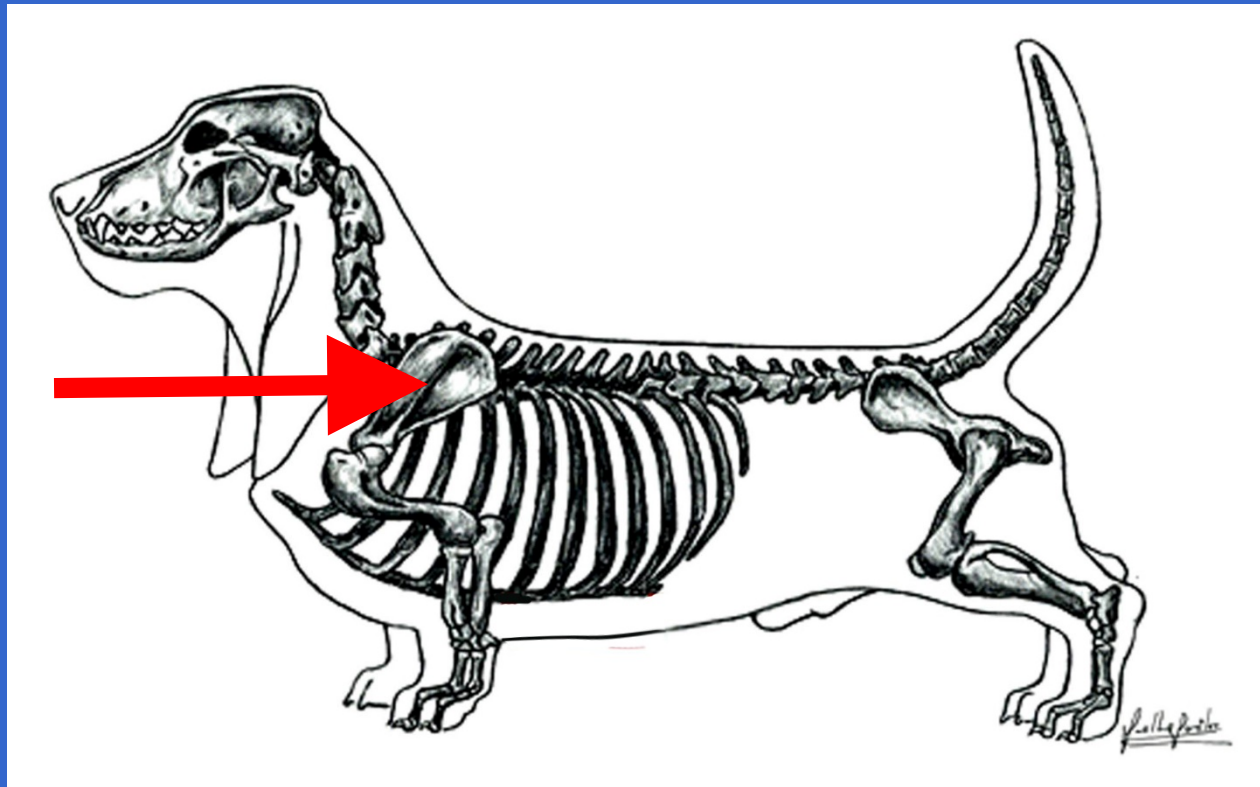
Lightning Round!





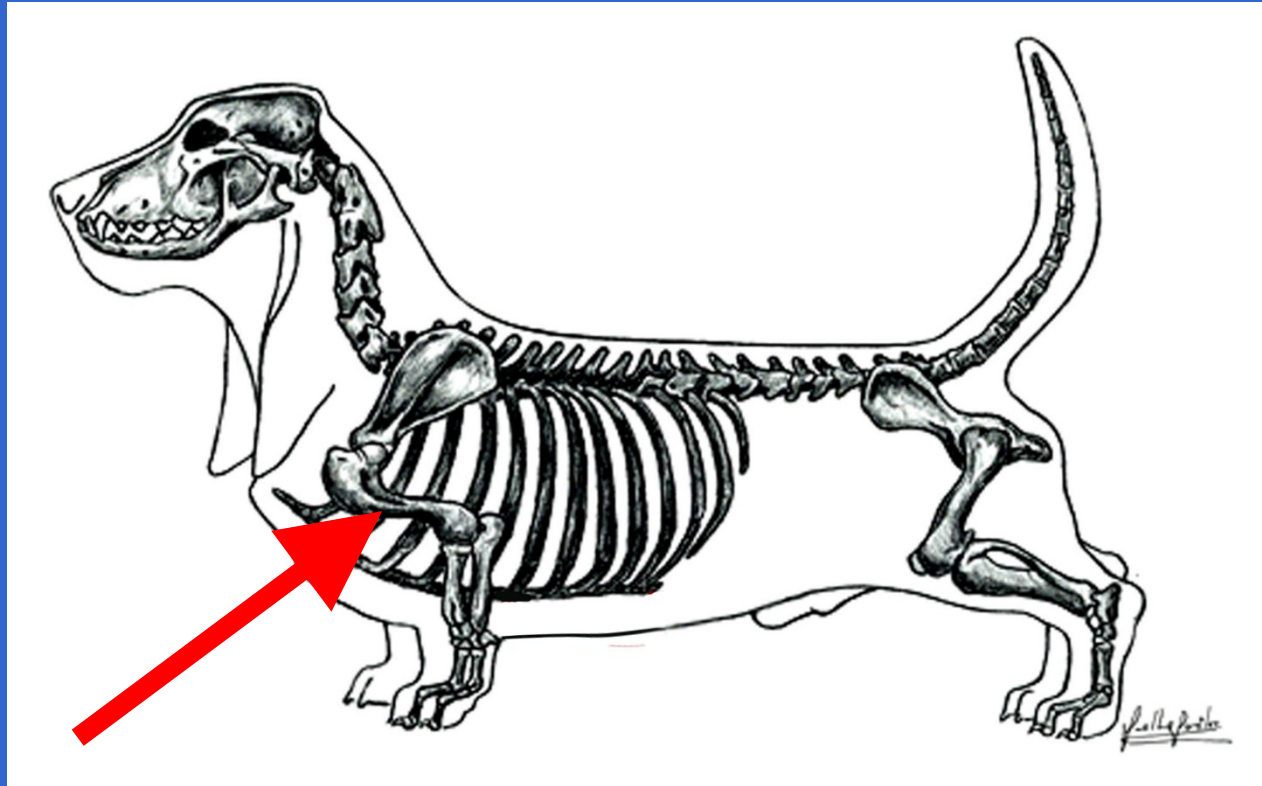
True or False?

The red arrow is pointing to the humerus.



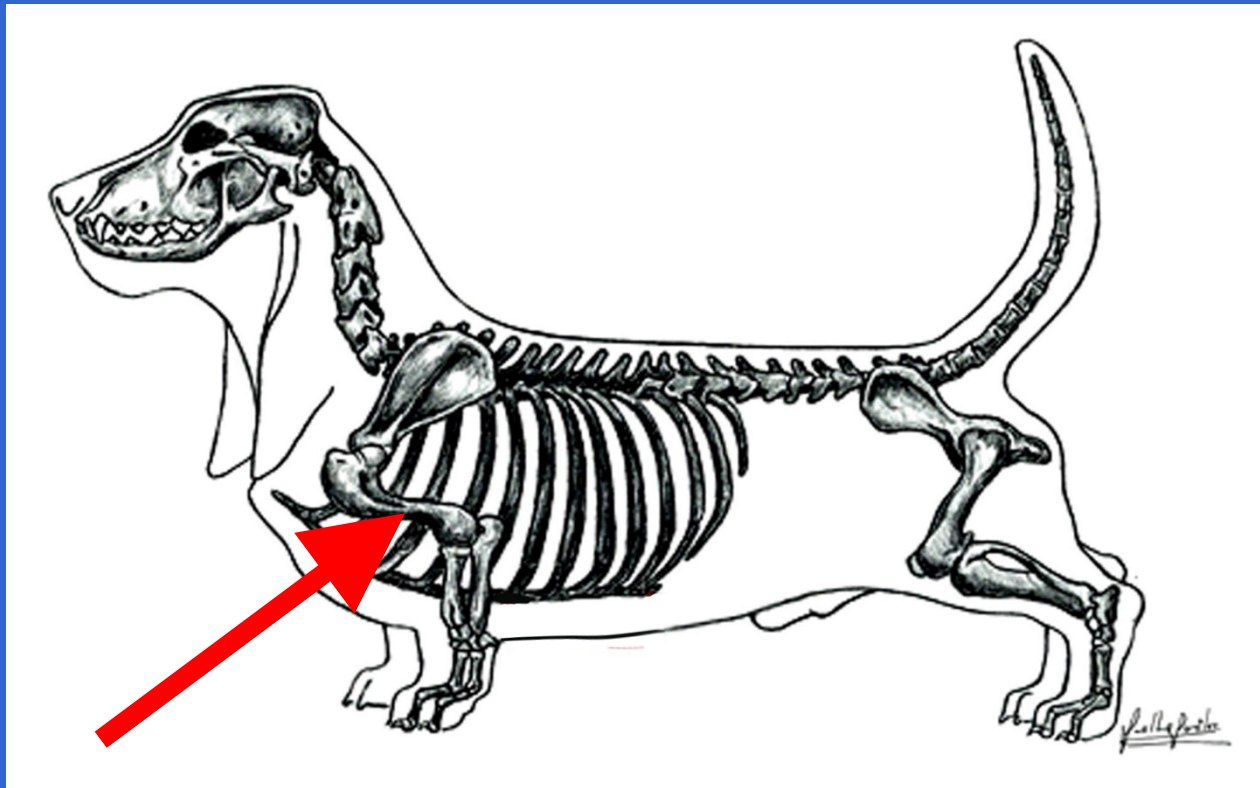
False.

The red arrow is pointing to the scapula, also known as the shoulder blade.



True or False?

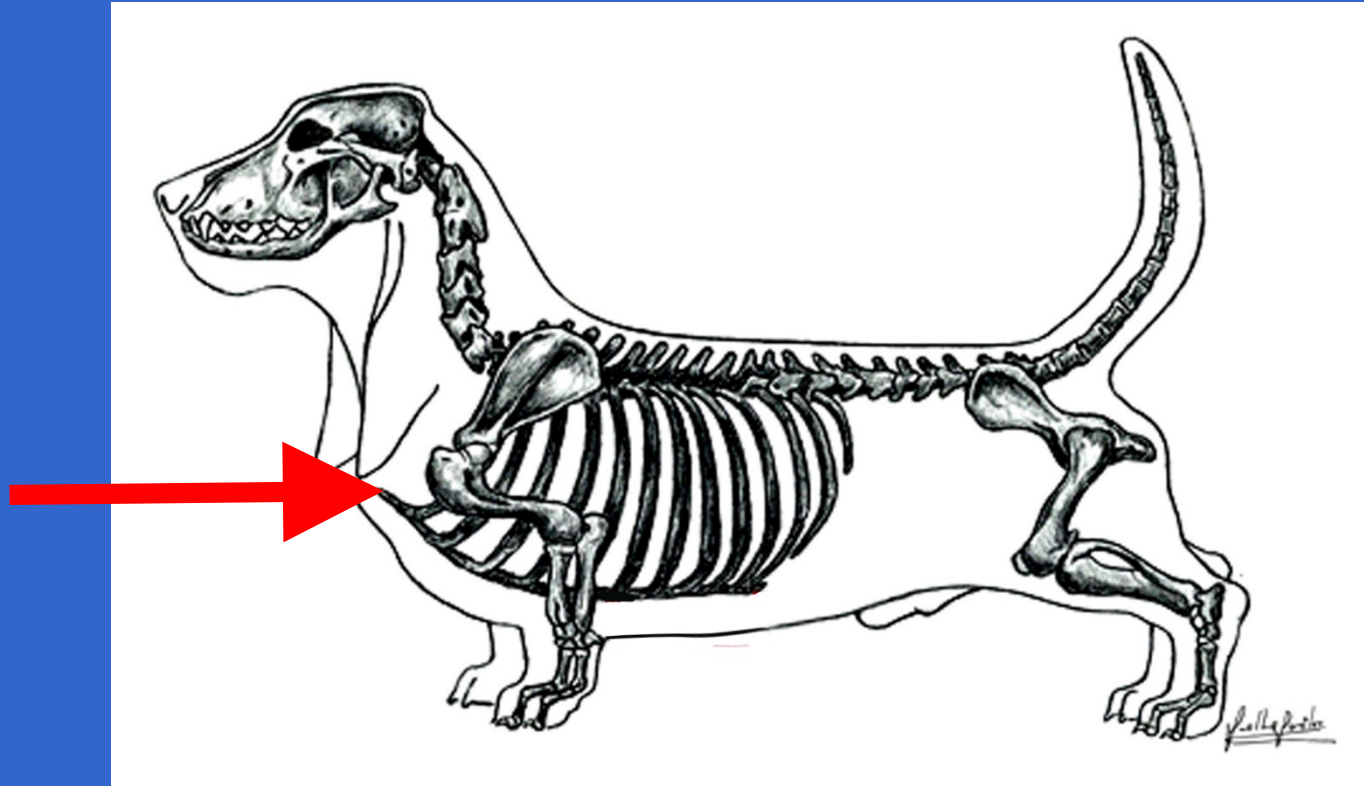
The red arrow is pointing to the upper arm, also known as the humerus.



True.

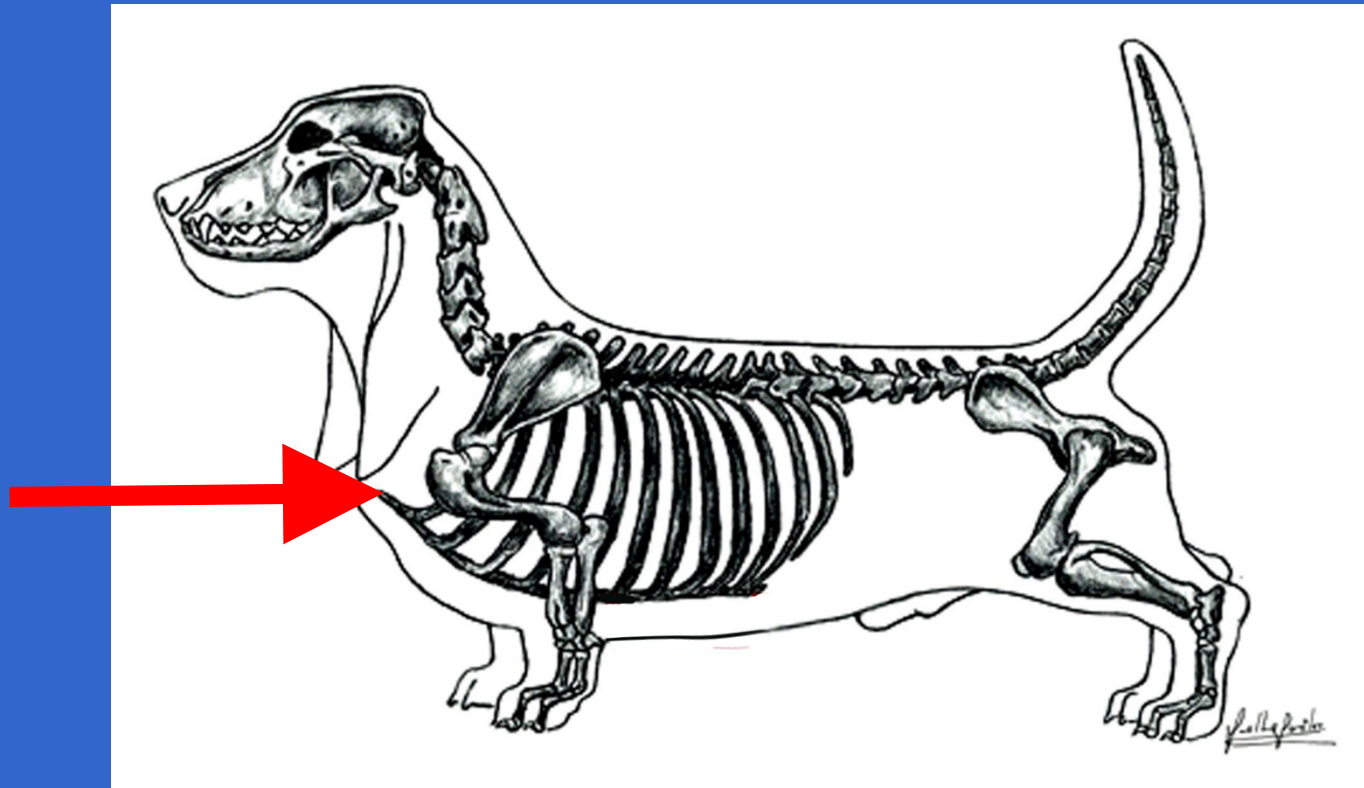
The red arrow is pointing to the upper arm, also known as the humerus.

The length of the shoulder blade and the upper arm should be approximately the same.



True or False?

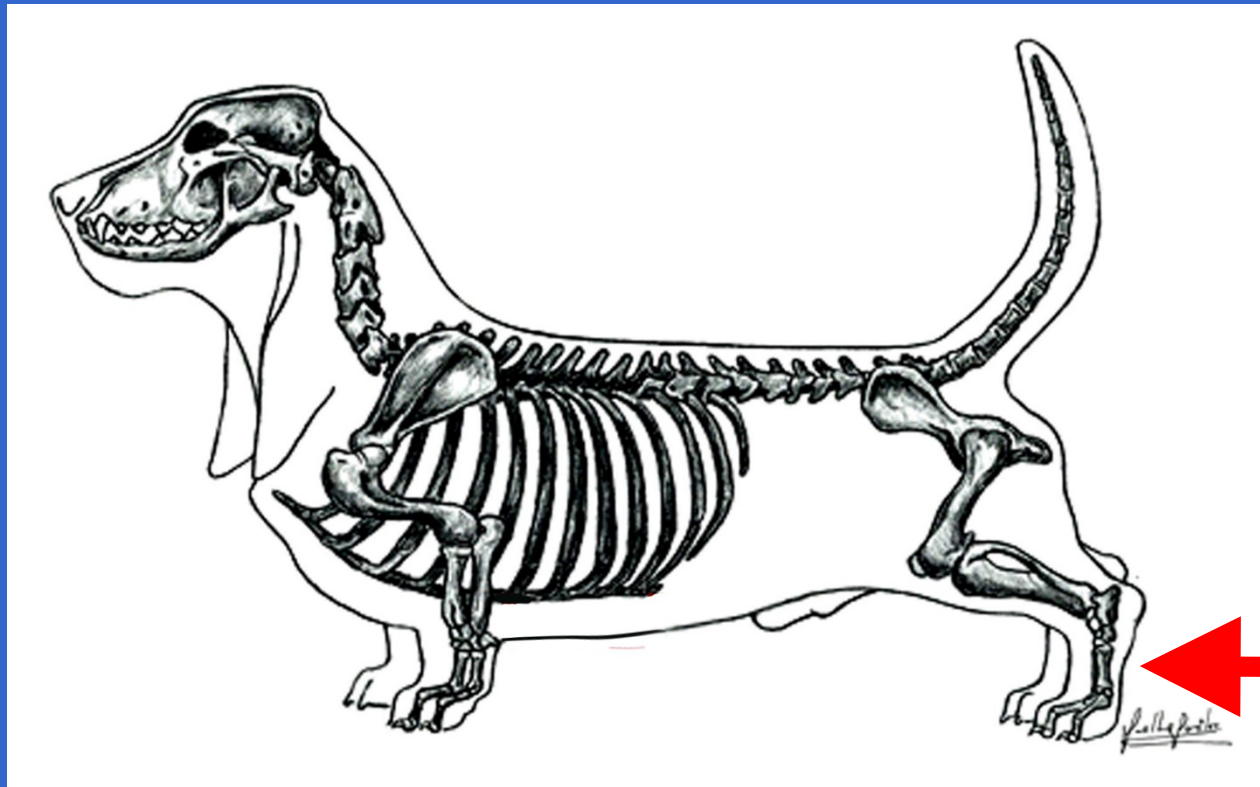
The red arrow is pointing to the prosternum.



True.

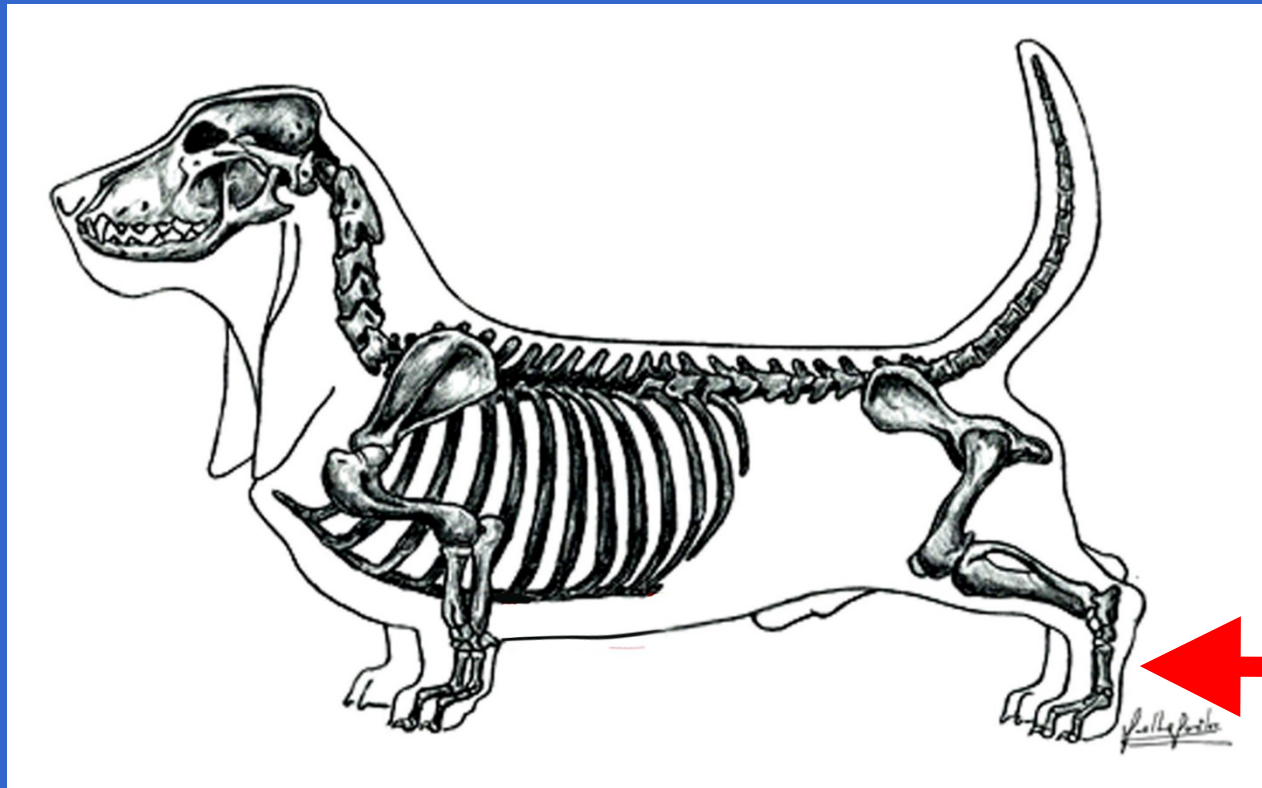
The red arrow is pointing to the prosternum.

Our standard calls for the chest to be deep and full with a prominent sternum showing in front of the legs.



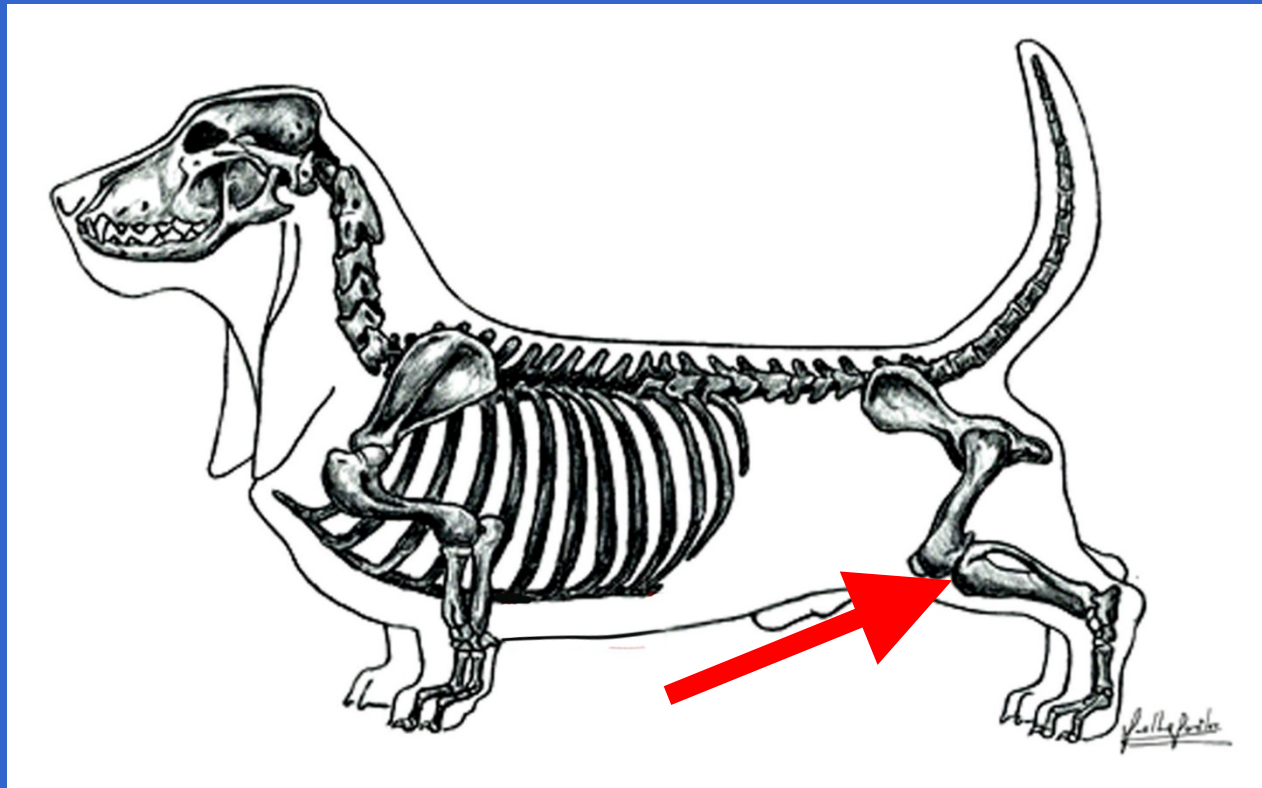
True or False?

The red arrow is pointing to the hocks.



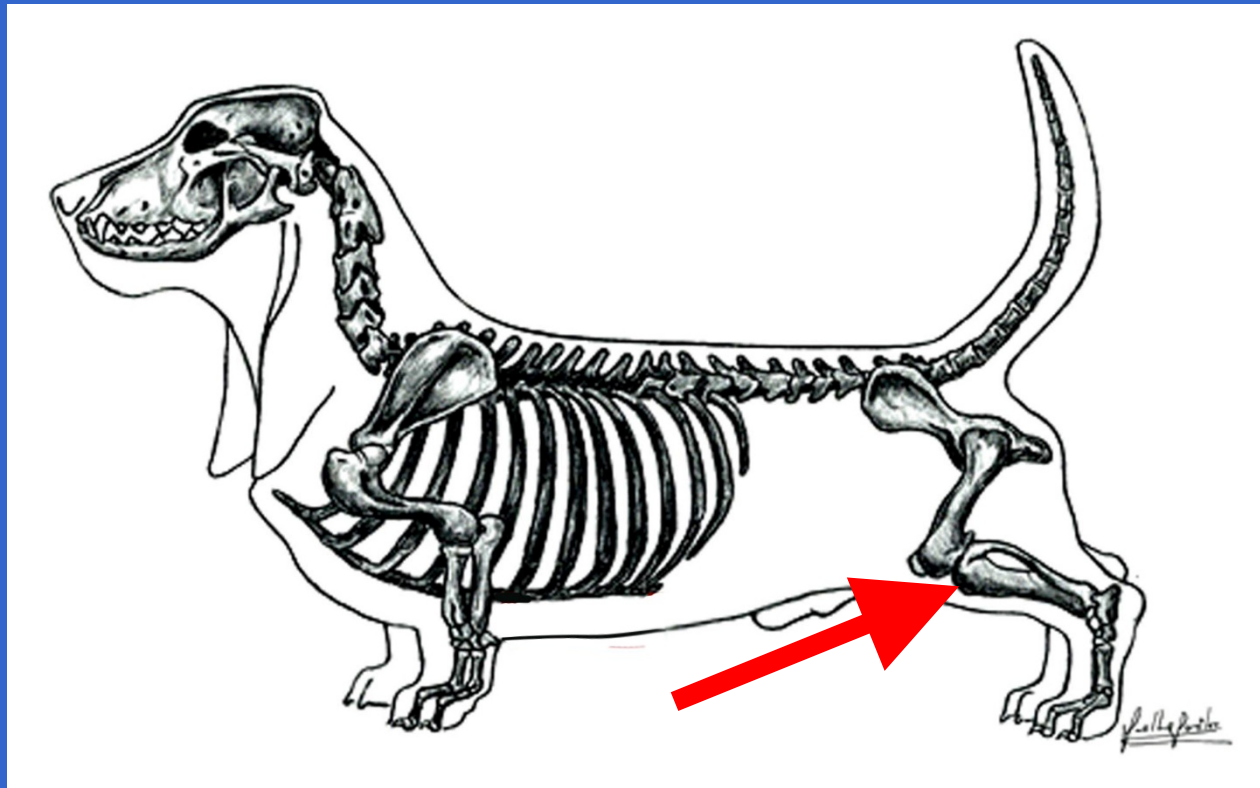
False.

The red arrow is pointing to the rear pasterns.



True or False?

The red arrow is pointing to the stifle.

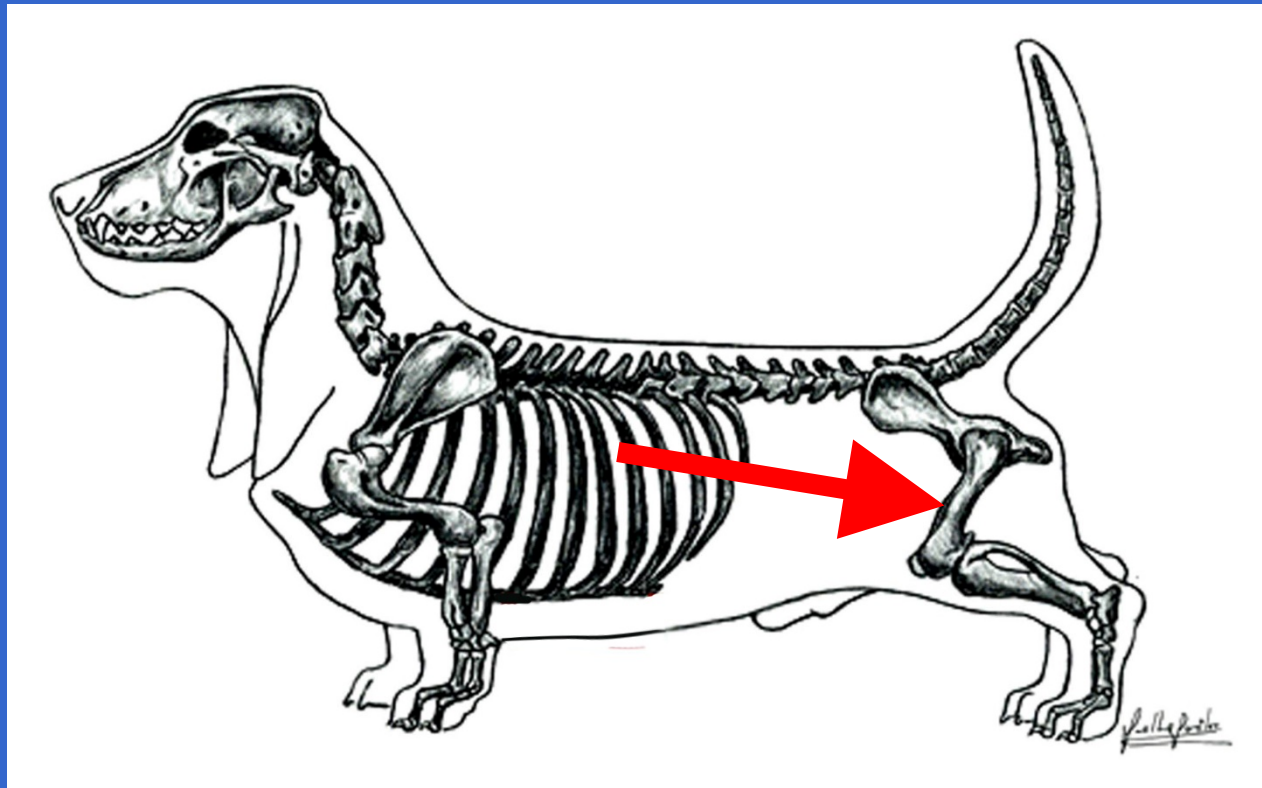


True

The red arrow is pointing to the stifle.

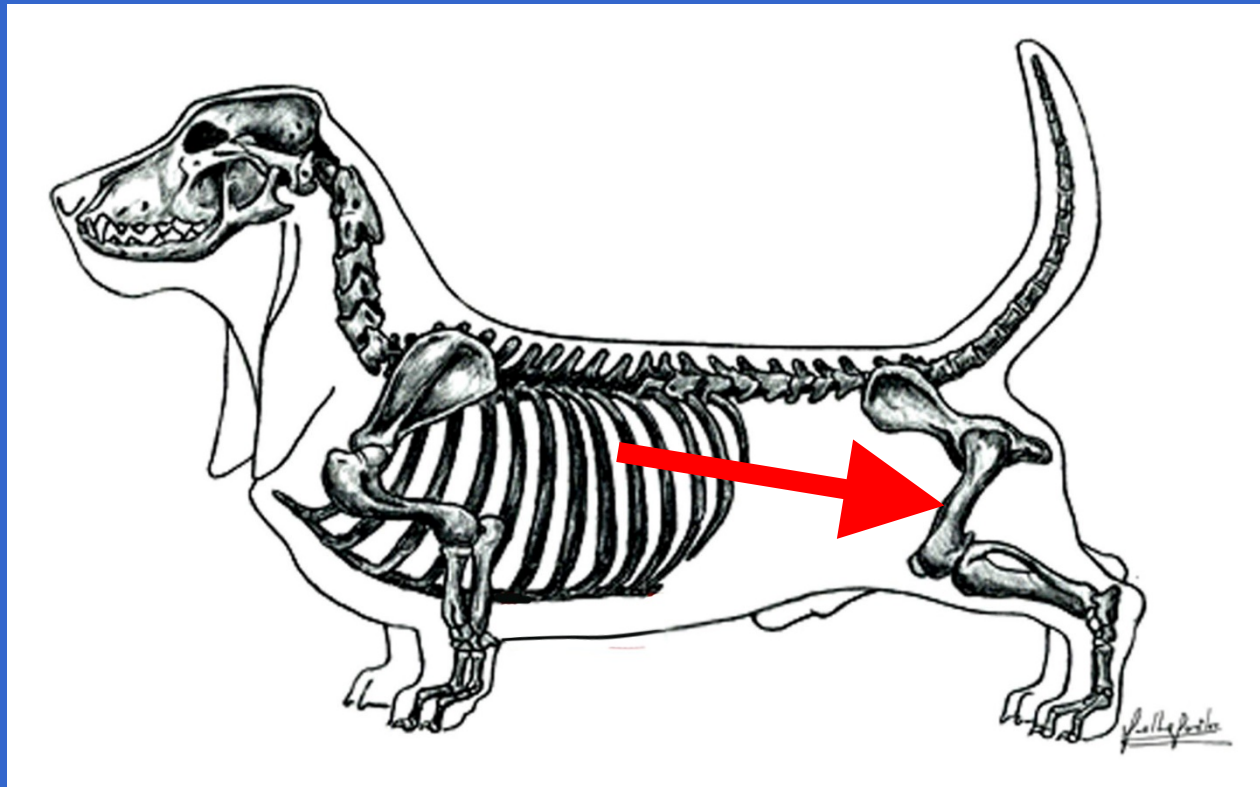
When we say that a Basset should have good bend of stifle, it means that the upper and lower thigh meet in 90 degree angle, showing a well let down stifle.

(from the BHCA Illustrated Standard)



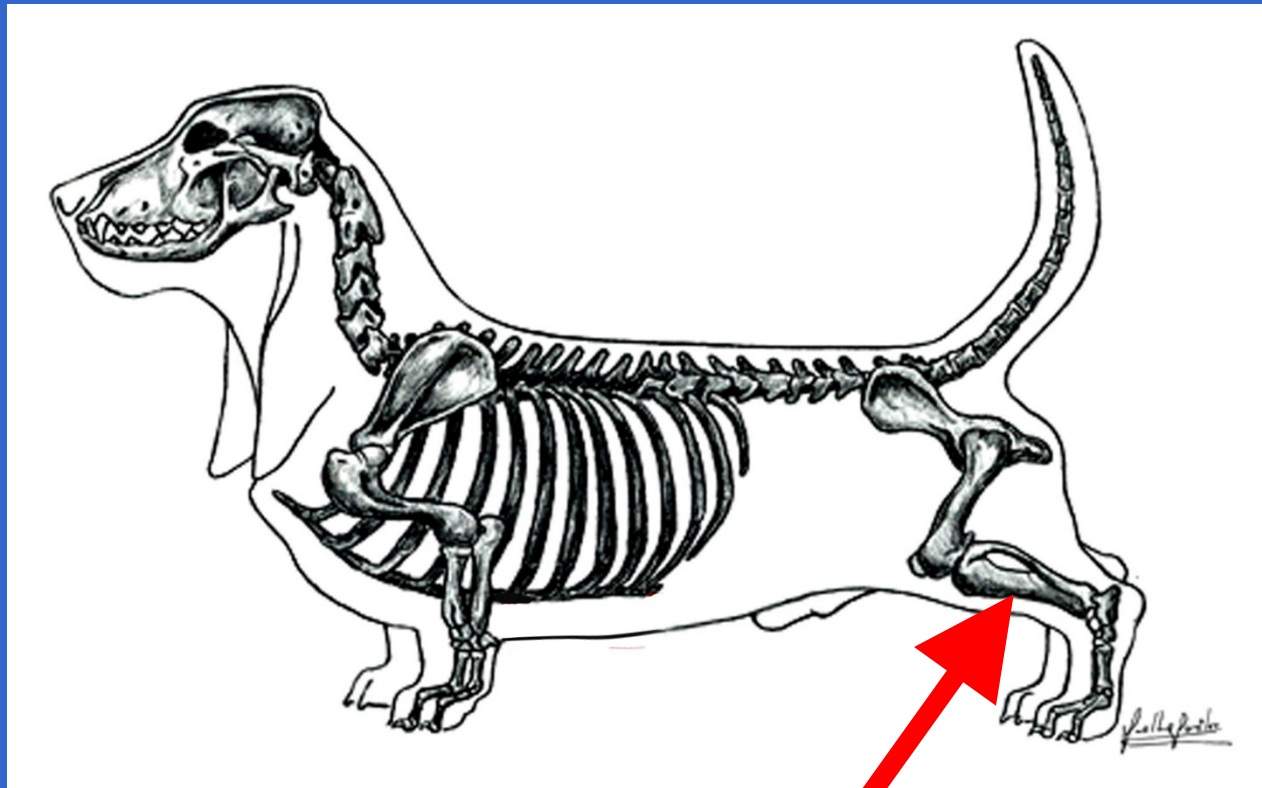
True or False?

The red arrow is pointing to the lower thigh.



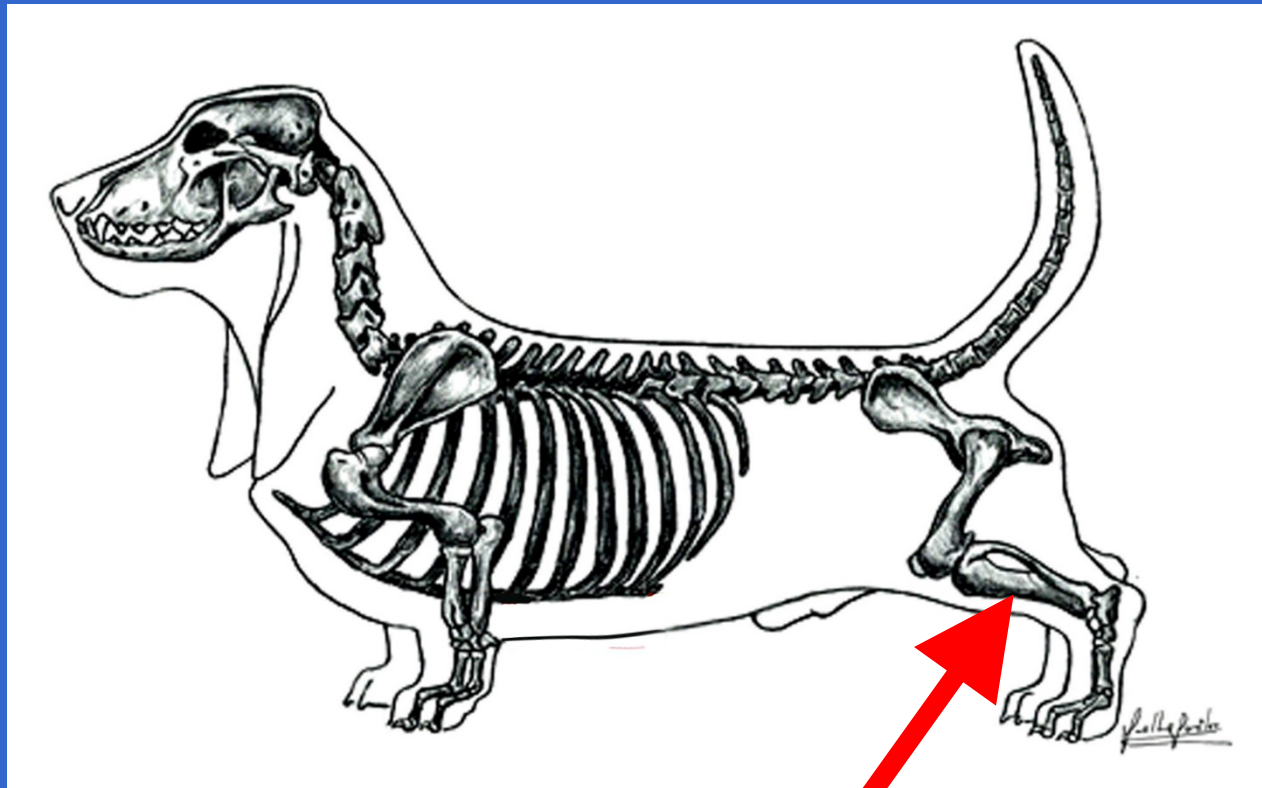
False.

The red arrow is pointing to the upper thigh also known as the first thigh.



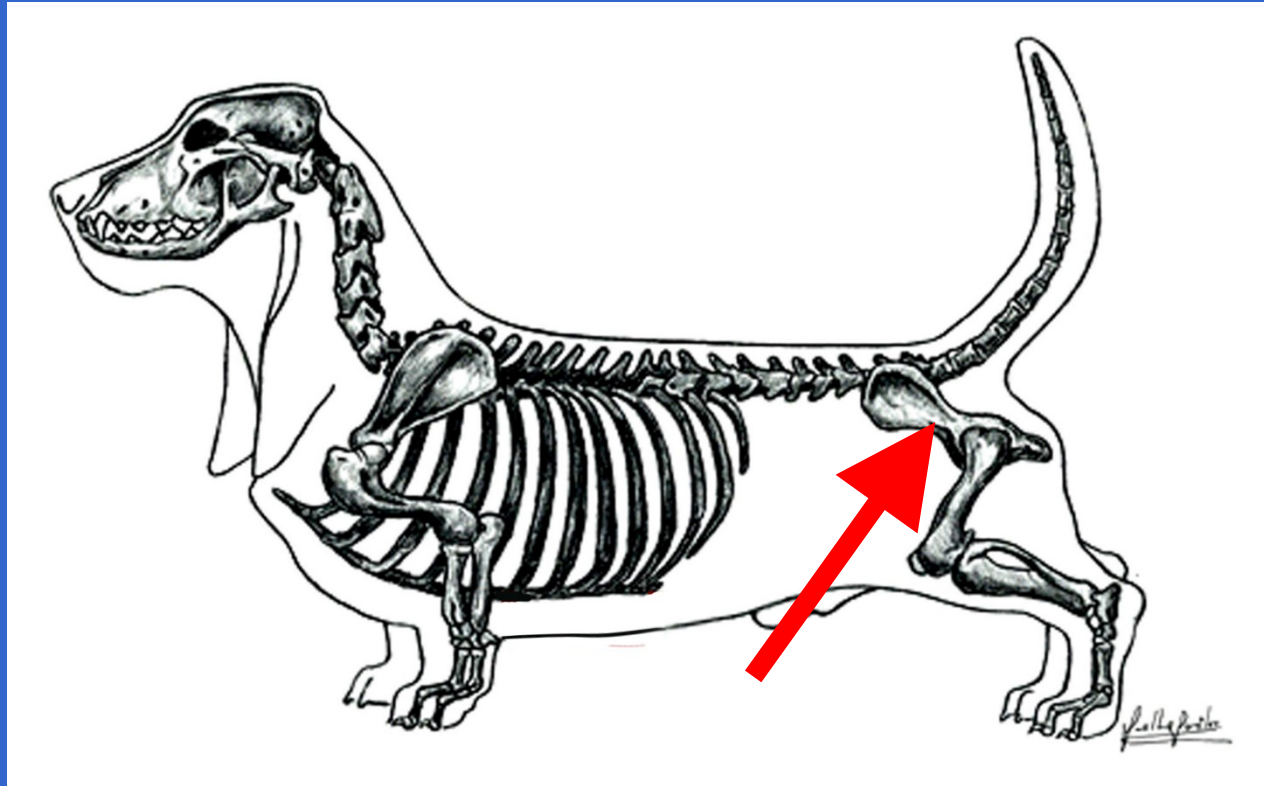
True or False?

The red arrow is pointing to the lower thigh.



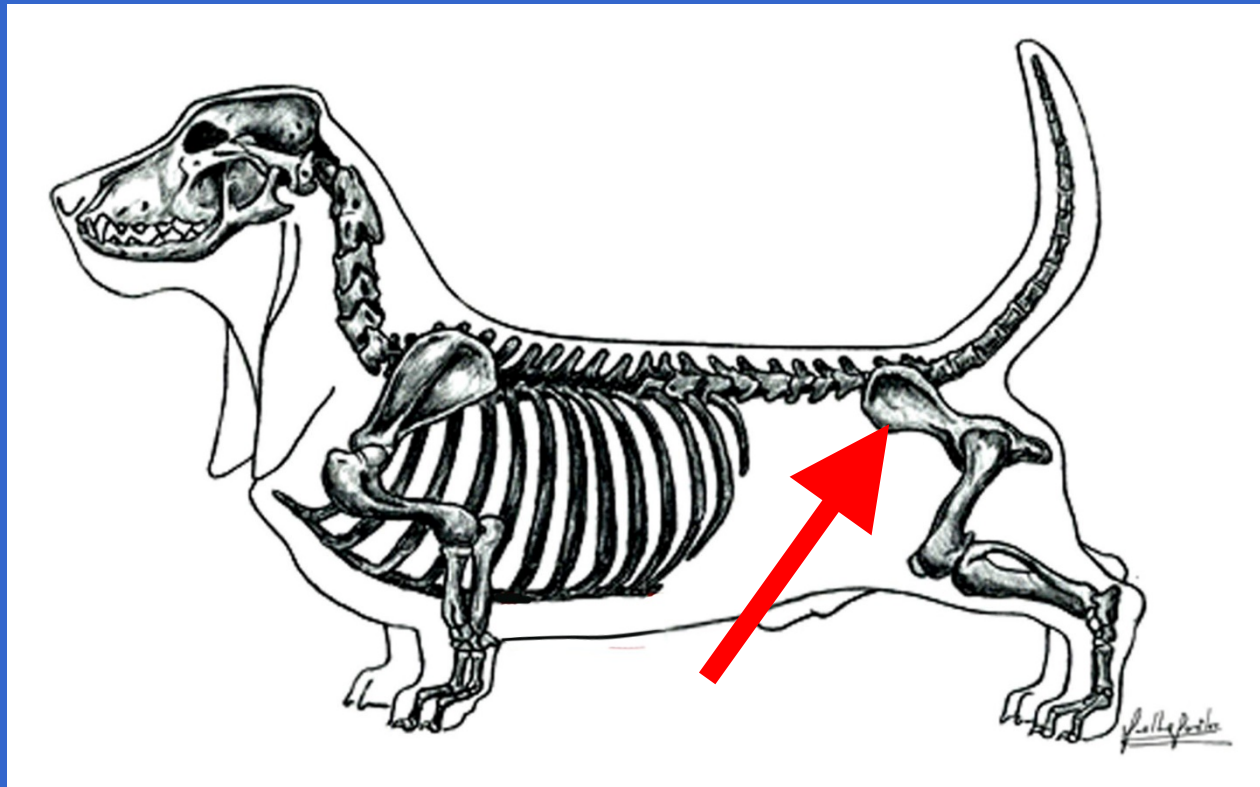
True.

The red arrow is pointing to the lower or second thigh.



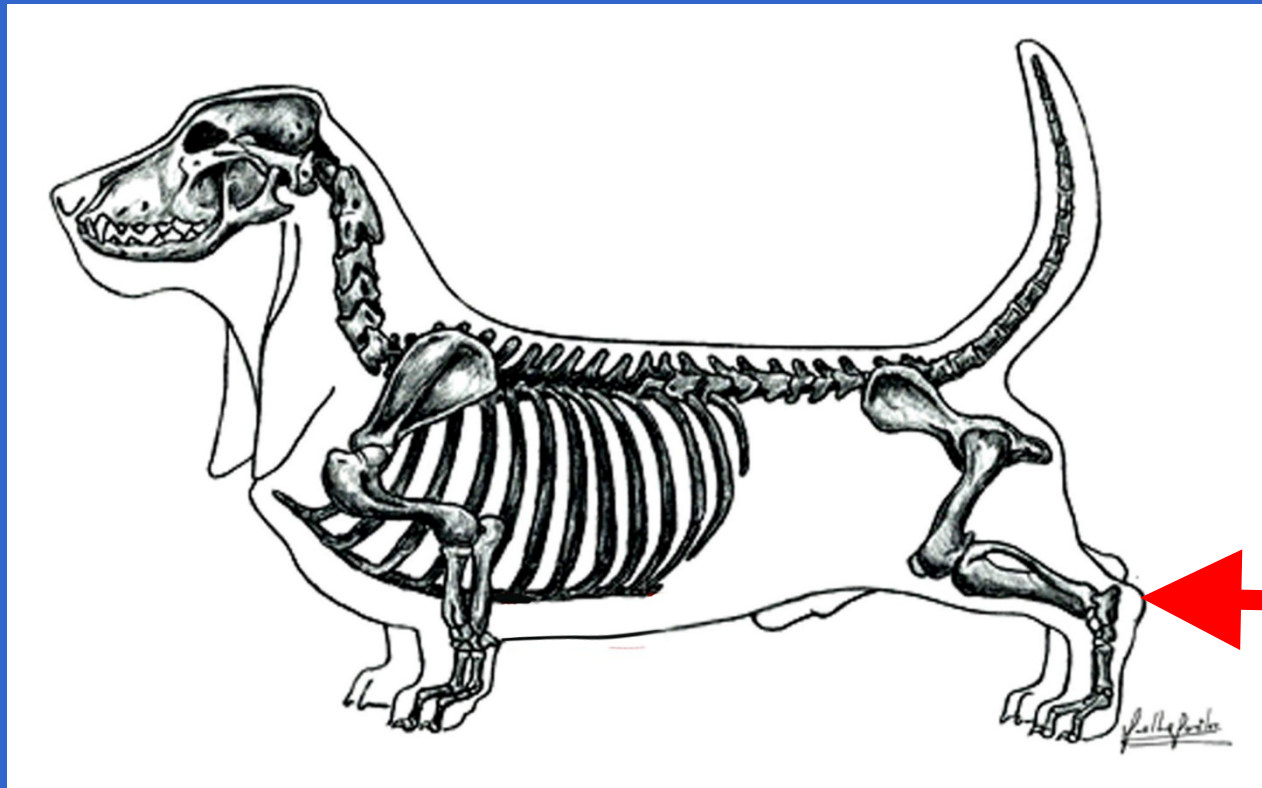
True or False?

The red arrow is pointing to the Pelvis.



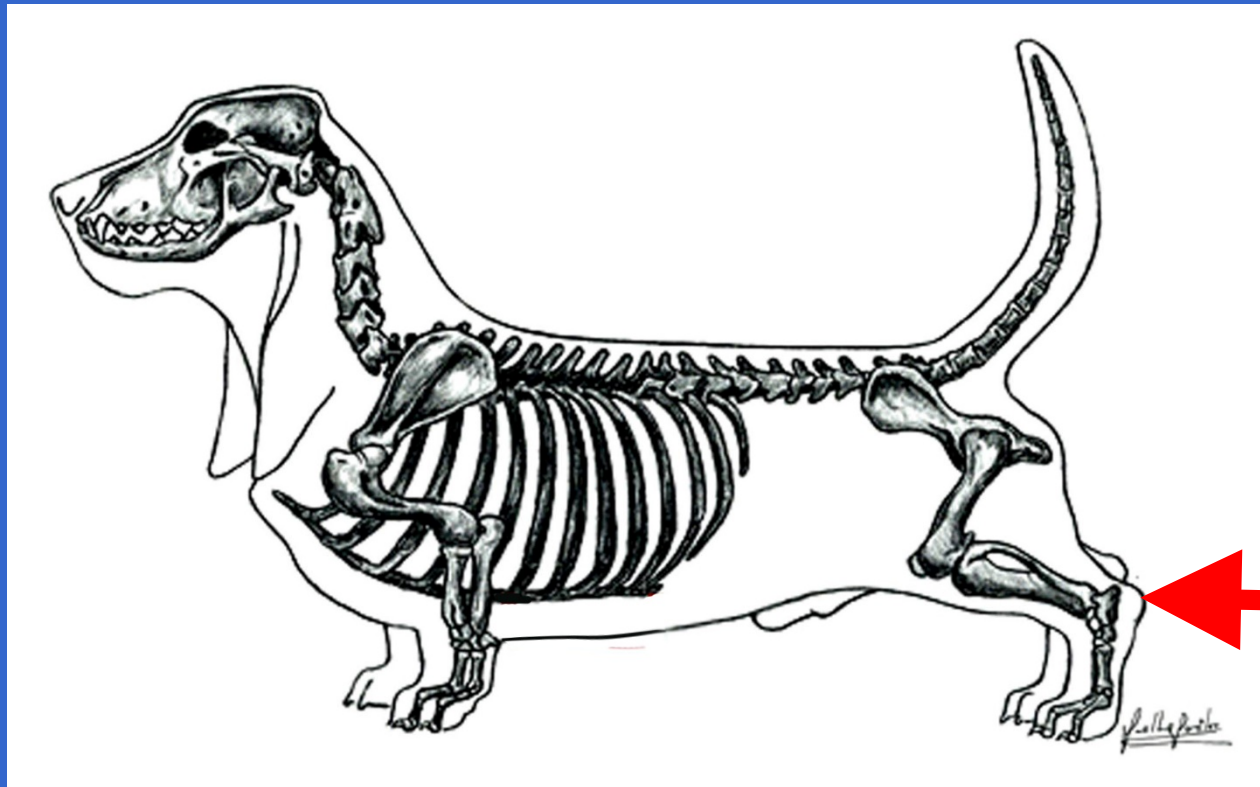
True.

The red arrow is pointing to the Pelvis which provides the sockets for the attachment of the rear legs.



True or False?

The red arrow is pointing to the hocks. The hock is a joint.



True.

The red arrow is pointing to the hocks. The hock is a joint.

**How well do you know
the AKC Basset Hound
Breed Standard?**



Lightning Round!



True or False?

According to our Standard:

A bite either overshoot or undershot is a serious fault.

True

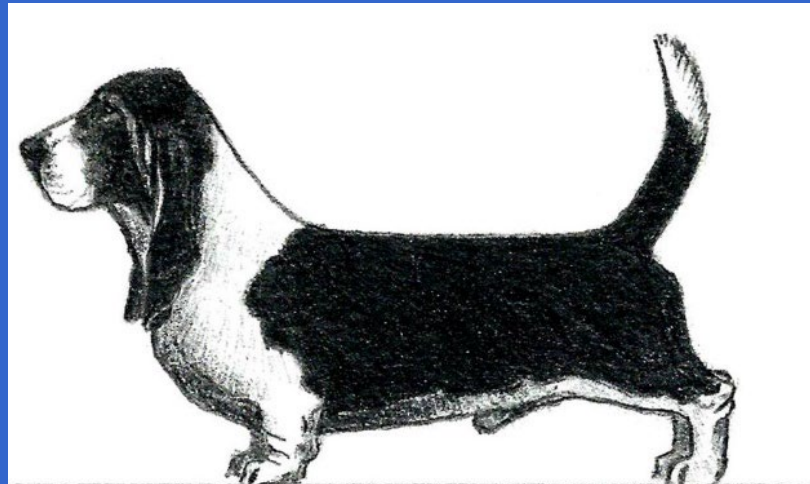
A bite either overshoot or undershot is a serious fault.

True or False?

**The chest is deep and full
with prominent sternum
showing clearly behind
the legs.**

False

The chest is deep and full with prominent sternum showing clearly **in front** of the legs.



Desirable Prominent Sternum

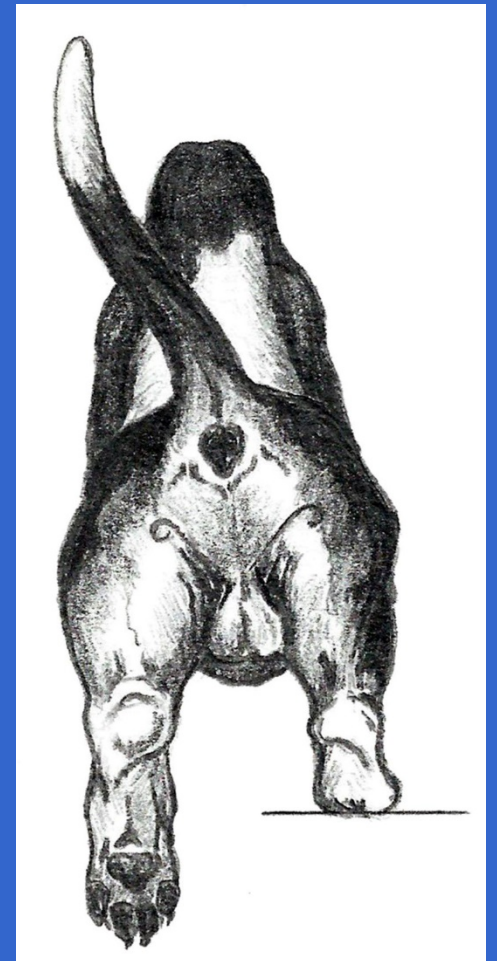
True or False?

Going away, the hind legs are parallel.

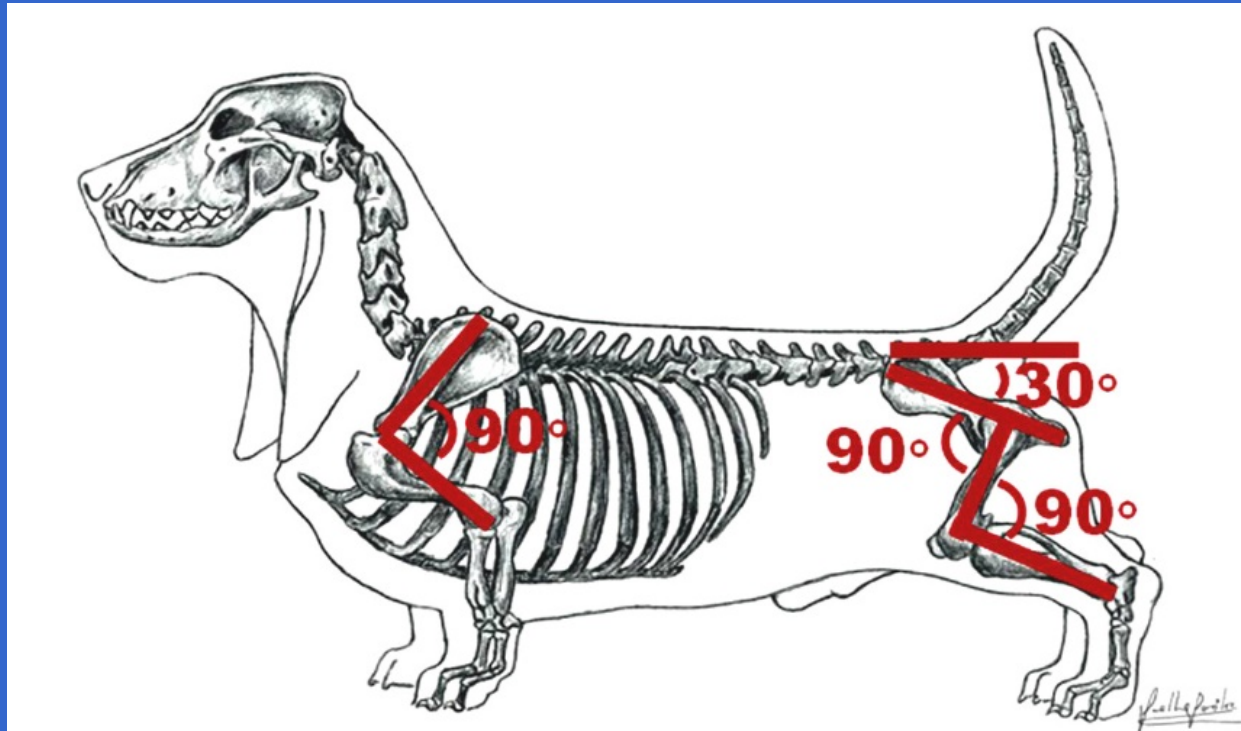
True.

Going away, the hind legs are parallel.

The Basset Hound does not single track going away. The hind legs should remain parallel.
(from the BHCA Illustrated Standard)

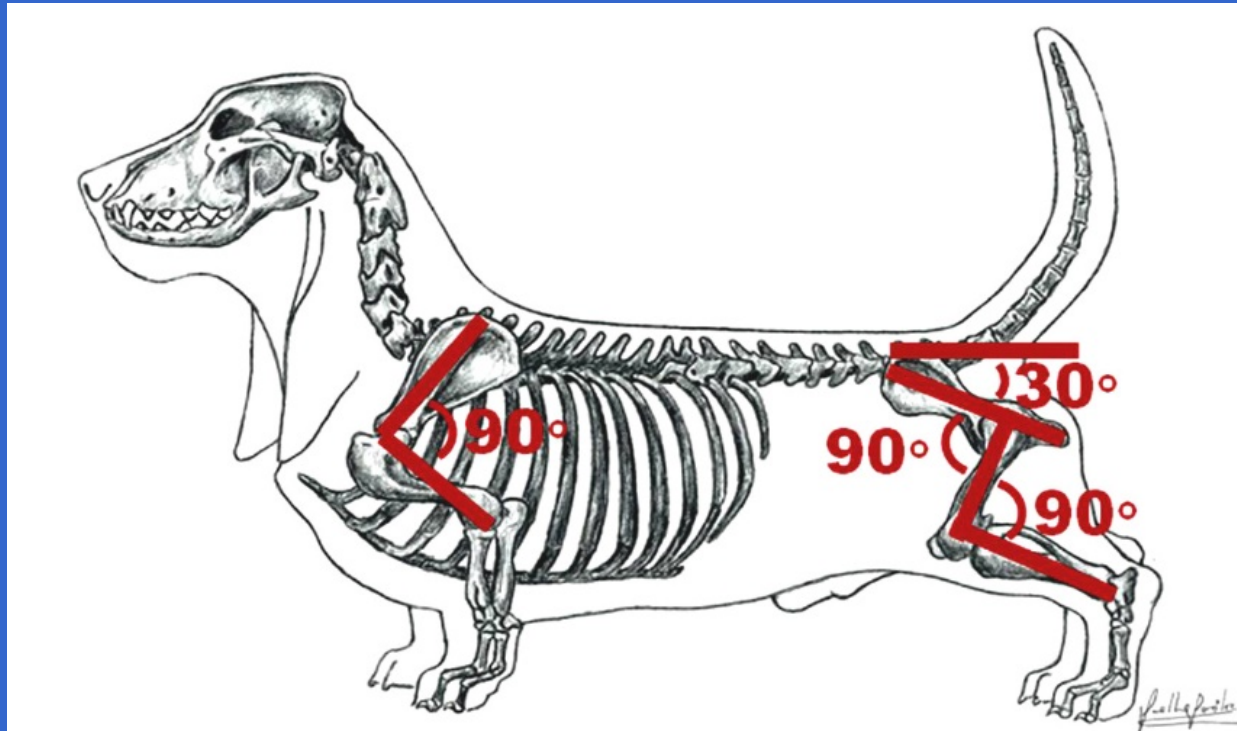


True or False?



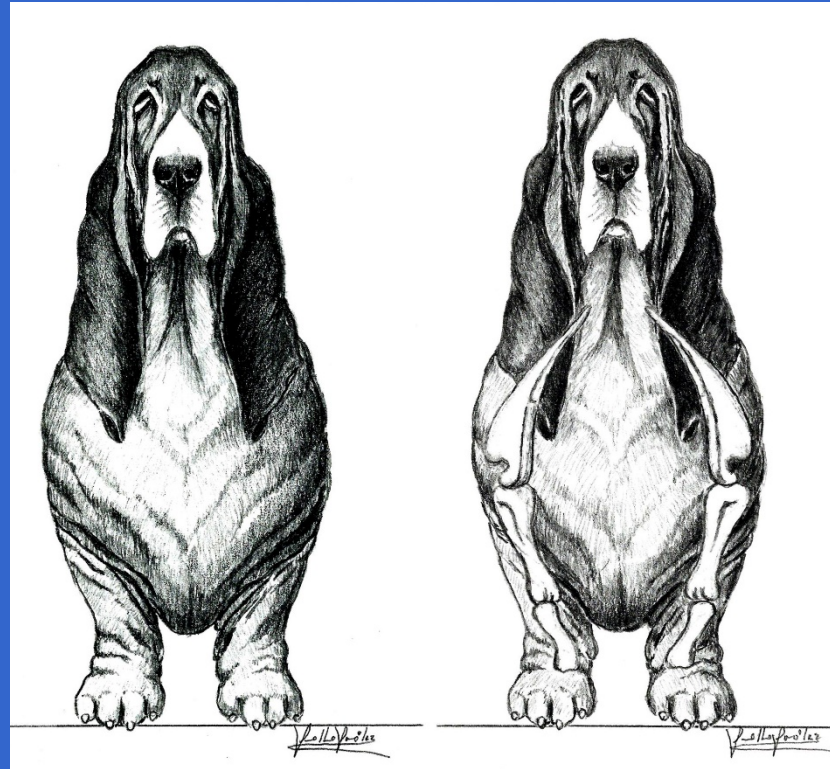
In our Illustrated Standard, the skeleton shows the correct forequarter and hindquarter angulation to be ideally 90 degrees.

True.



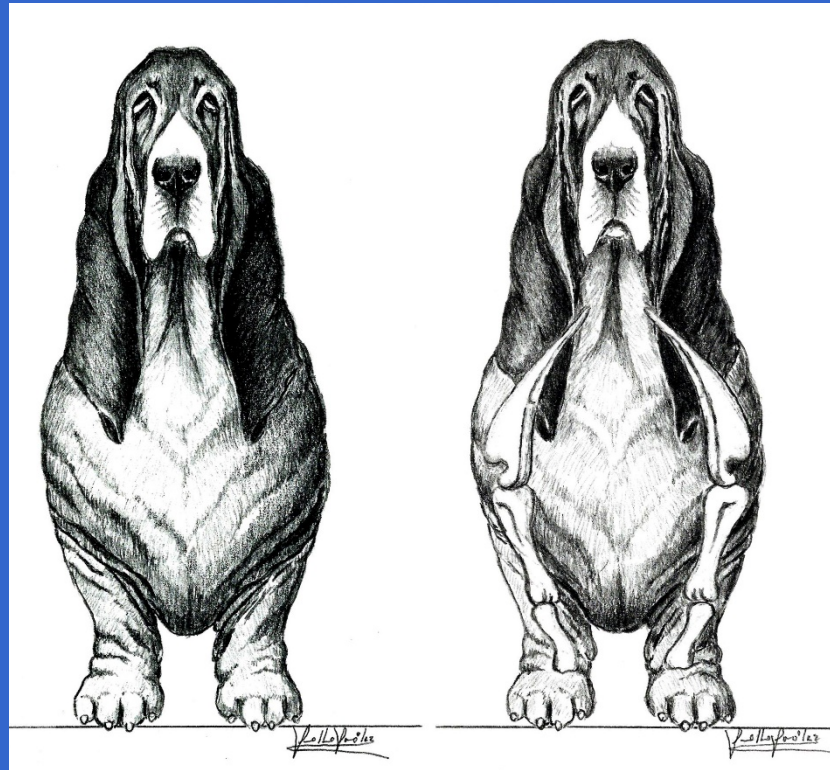
The skeleton shows the correct forequarter and hindquarter angulation which is ideally 90 degrees.

True or False?

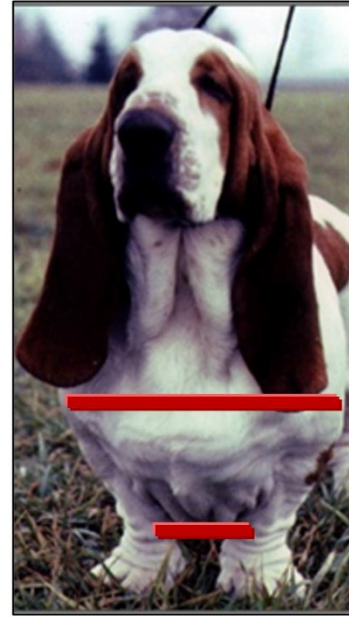


These are correct fronts as demonstrated in the BHCA Illustrated Standard.

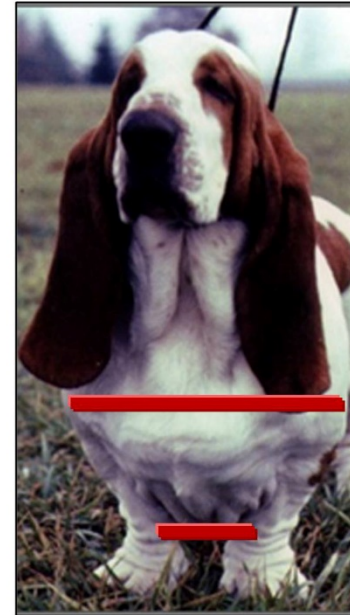
True.



These are correct fronts as demonstrated in the BHCA Illustrated Standard.

A**B****C**

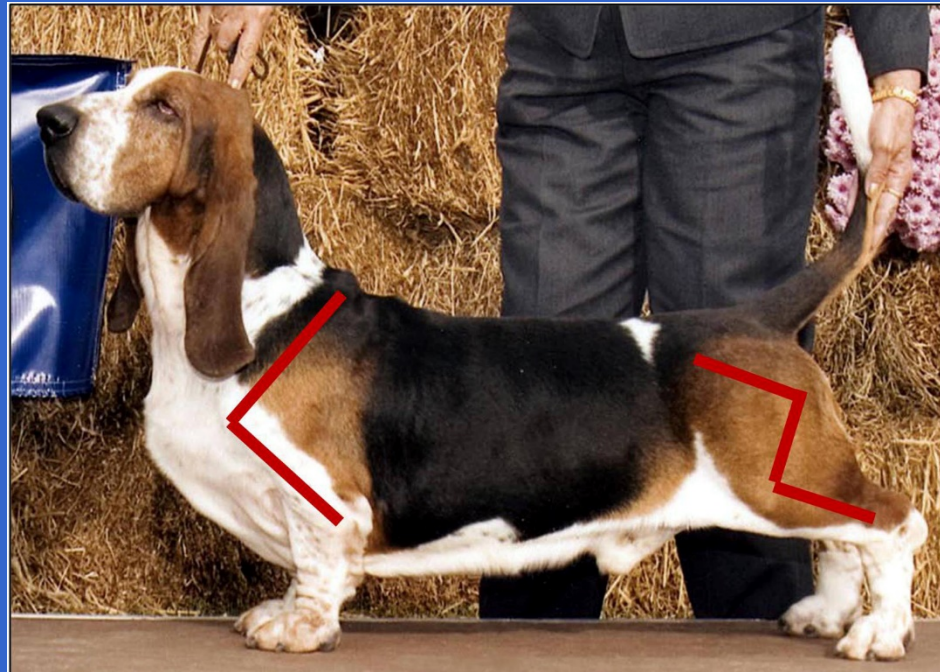
**Does dog A, B or C
have a correct front?**

A**B****C**

Does dog A, B or C have a correct front?

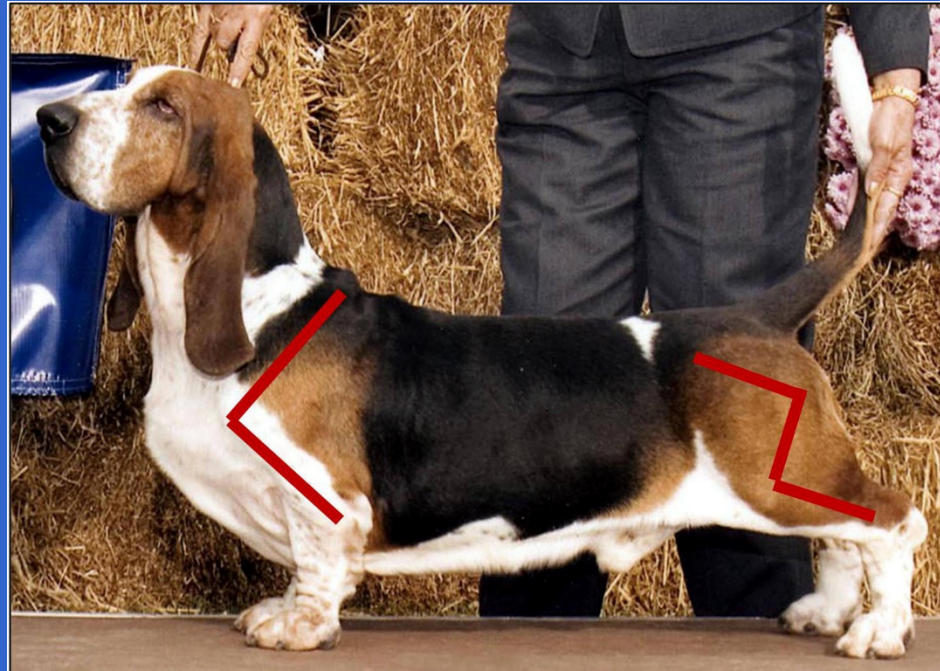
A, B and C appear to have correct fronts as demonstrated in the BHCA Illustrated Standard.

True or False?



In our Illustrated Standard, the angulation of the dog in this photo, demonstrates ideal 90 degree front and rear angulation.

True.



In our Illustrated Standard, the angulation of the dog in this photo, as well as the skeleton on the previous slide demonstrates ideal 90 degree front and rear angulation.

**Where do I brush up on
Basset Structure and the
AKC Standard?**



**For those of you looking for
educational material, visit the BHCA
Website.**



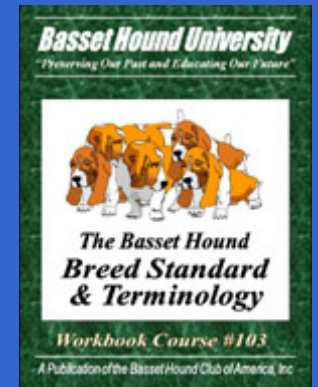
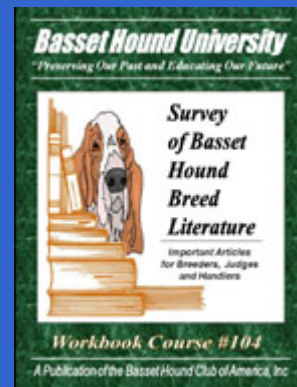
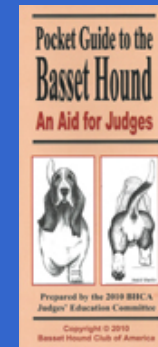
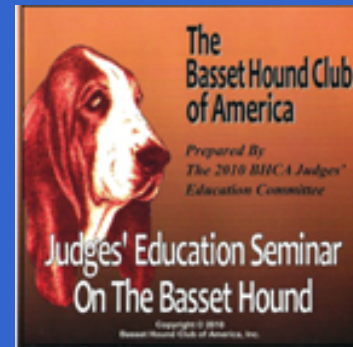
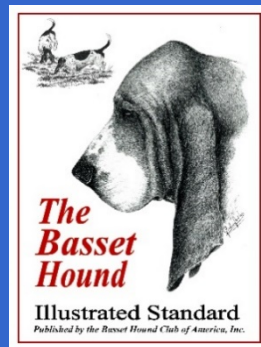
click on

**Basset Hound
University,**

or visit

About the Breed

BHCA material we make available to Judges, Breeders and/or Handlers is available at no charge on the BHCA Website.



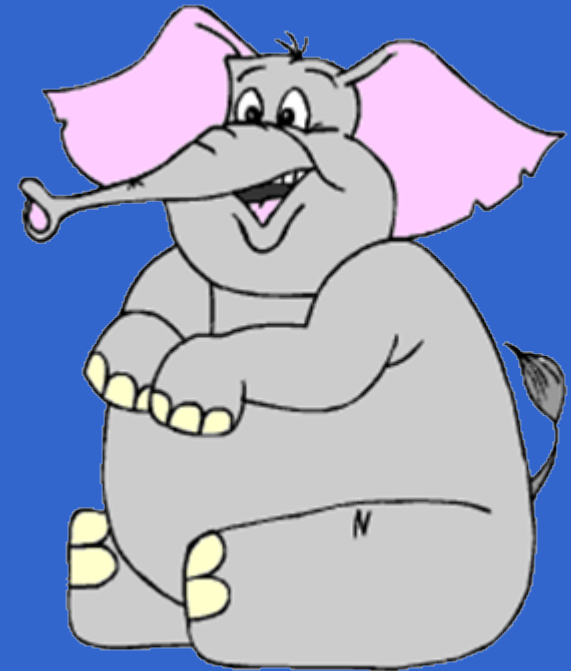
**Want to be more
competitive?**



Let's help you!



**We'll talk about
the elephant in
the room.**



**Judging across the United States can vary.
Judges can only judge what is brought to them on
the day.**



Most judges try hard to do a good job. That doesn't mean we will always agree, but on the day, it is their opinion that we asked for.



**We love our dogs. It can be
hard to not take a loss
personally.**



**Sometimes, we feel the
need to make excuses for
why we didn't win!**



**I got beat by a
professional.**

It was political!

**The judge doesn't understand
our breed.**

**The judge always
puts them up!**



**Judges can only
reward what they see.**

**Did your dog
show well?**

**Is your dog in condition and
groomed properly?**

**Are you sure your
dog looked good?**



Remember

**We all started at
the beginning.**

Do the best you can do.

**Ask for help if you
need it!**



At the end of the
day,

You are taking the
dog you love
home.

There is always another
dog show.

Everyone is a winner
in this scenario.



**Judges have two minutes per dog.
Don't waste your opportunity to shine.**



That includes getting the classes in and out of the rings and marking their book.



**Just gaiting your dog into the ring and
your first go around can set you up for
success or failure.**



This is your first chance to make an impression. Make sure it is a good one!



**To prepare for this seminar, I asked
breeder judges as well as all-arounders
one question.**



**What can we do as exhibitors to make
a favorable impression when we show
our dogs?**



**Or in other words,
How do we make it easier for you to
choose our dog over another?**



**You might be
surprised by some of
the answers.**



Most of their comments referred to things that are simple to remedy.



Present a well-trained dog.



**Leash-breaking in the
ring isn't wise.**

We all know Bassets have a sense of humor. A few puppy antics in an otherwise well-trained dog can be overlooked.



**Present a clean, well groomed,
physically fit Basset.**



**The Basset Hound Foot is a hallmark of the breed.
Take care of it! Keep the nails short.**



Present your Basset with clean teeth!



No judge wants to look at this mouth!



Plan ahead. Grooming as well as conditioning are a constant job.



**Not just a day or
week before the
show.**

**A judge can only evaluate your
Basset based on your
presentation on the day.**



Stack efficiently.



Gait your dog at his best speed.



**Correct gaiting speed will vary.
Depending on the style of the dog.**



Keep your dog in the center of the mat.

**Keep an eye on your dog to make sure
he is moving in a straight line.**



Don't move ahead of your dog. It appears that you are 'dragging the dog'.



**Sometimes you are so busy
hiding faults, you call
attention to them.**



Less is more!
The best handlers become invisible.



**Don't be caught unprepared.
Keep your eye on the judge.**



Present your dog's best attributes.



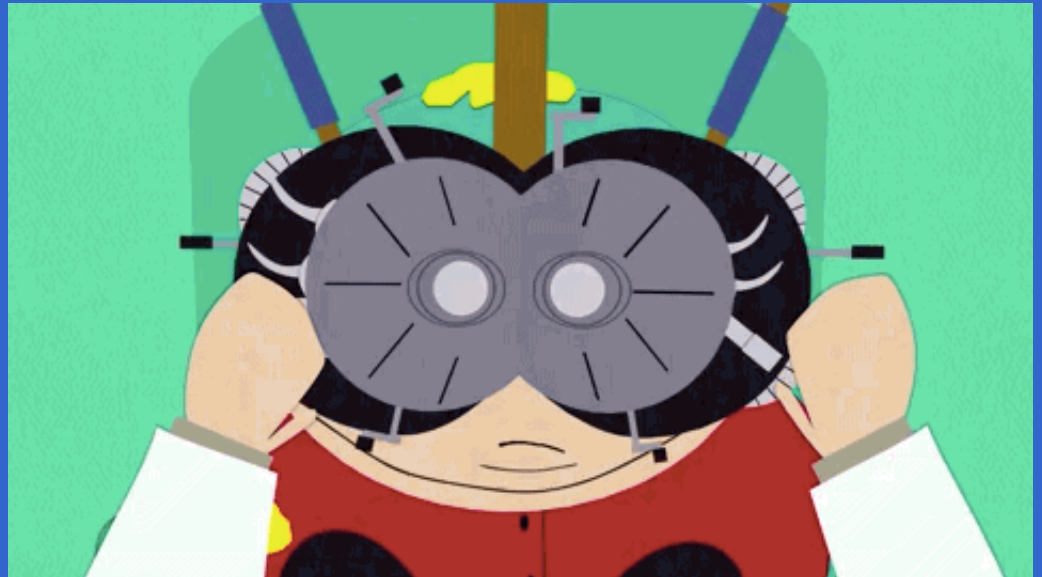
**Regardless the style of the dog,
correct presentation is important.**



**Do you see improvement in these
upcoming slides?**



This or That?
We all have a different eye for a dog.



This.



*Posting in front, under-stacked behind.
Backline not level, ear caught up in collar.*

Or That?



Front legs correct, rear pasterns are perpendicular to the ground. Backline level.

This?



Bitch is too heavy, (rolls over shoulder) rear pasterns are under stretched, backline looks poor.

Or That?



After a diet and exercise, standing over her front, rear pasterns now perpendicular. Backline now level.

This?



Rear legs not matched, head and neck not up, nose too far down.

Or That?



Head where it should be, nose up is more attractive, rear legs now correct.

This?



14 months, nose down, head not up, not stretched behind, she looks very dumpy!

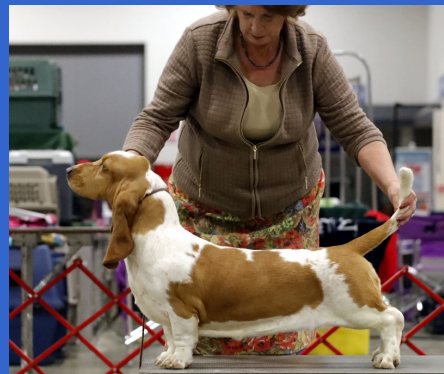
Or That?



At 20 months, head and neck up correctly, proper leg placement. Not dumpy now!

Small adjustments make a big difference.

Note that the tail is different in each of the above three pictures. Tiny details make a big difference.



Watch Other Handlers!



You may discover a new trick or just enjoy the art of their presentation.



See how different style dogs are shown to their best advantage.



Don't let your dog stand around in a class looking ugly.

Most Bassets tend to stand around in an unflattering pose.

Encourage them to sit and relax when not actively showing them.



Five Special Topics



1. **Stacking on Ramps**
2. ***Go-overs on the Ground***
3. ***Standing for a Wicket***
4. ***Don't be critical of other dogs***
5. ***The poop fairy is a myth!***

Let's start with the ramp.



Before presenting your dog on the ramp, make sure that it is set up securely.

Not all Stewards or Judges are aware that some ramps can collapse if not set up properly.



If you arrive at the breed, junior, group, or BIS ring and don't see a ramp available, politely let the steward know that the Basset must be judged on the ramp.



That gives them time to call the superintendent's desk and secure a ramp.

Do not argue under any circumstances!

Simply request that the AKC Rep report to the ring if necessary.



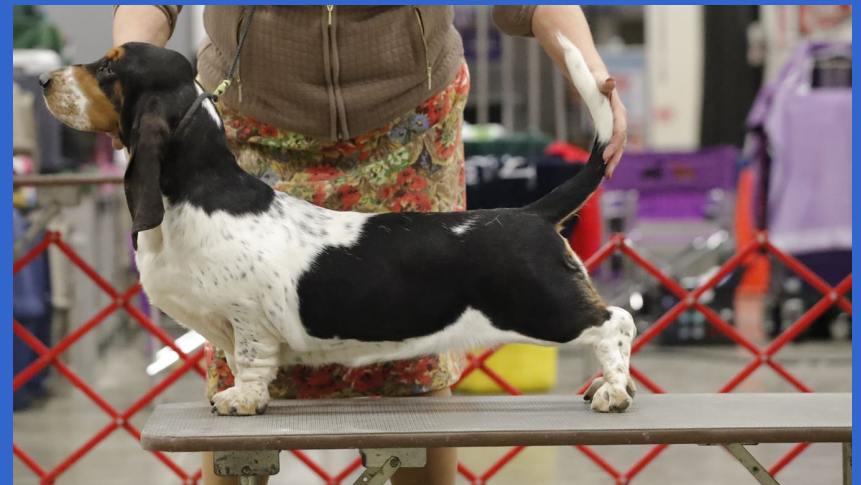
**Train your Basset
to walk up a ramp, stack &
turn around to go down.**



When presenting your dog on the ramp, place him to the front left.

The judge can easily examine your dog.

Also, it may prevent an accident if the judge accidentally bumps into the ramp.



This dog is being presented correctly on the ramp.

If you must lift them on and off, be careful to keep them balanced and comfortable.



This dog is placed too far back and on the far right side of the ramp.



**This dog is being presented
correctly on the ramp.**

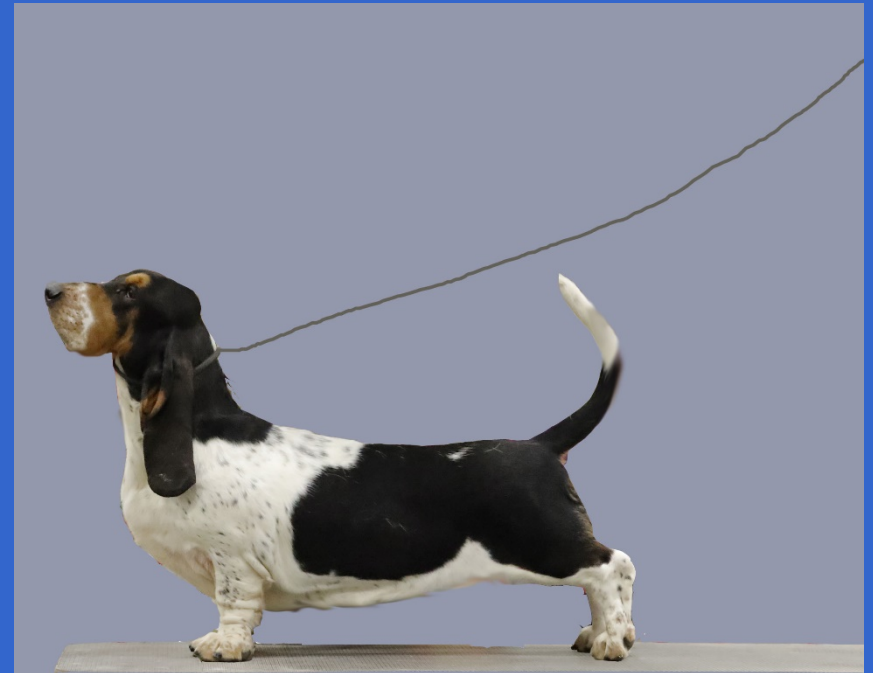


**NEVER jump a
dog off the front
of a ramp!**



Never showboat with your dog on the ramp. Accidents can and have happened.

A sharp noise can startle a dog and you are too far away to help the situation.



Common courtesy in the ring is:

Allow the dog on the ramp prior to yours to leave the ramp without crowding him.



**Wait until it has moved past the ramp before placing
your dog on the ramp.**

**Your dog will be more focused for you and you won't
distract the other dog.**



The Judges Education Committee discourages going over Bassets on the ground. It is often still done.

Train your dog accordingly.



In fairness, many judges gained their licenses before the ramp rules came into effect.

It is not unusual for a further examination on the ground to occur.

Be ready for anything.



Wicket

You should know how to stack a dog to be measured with a wicket.

**Wicket demonstrations are often done at AKC Dog Shows
By the AKC Representative. It would be a good idea to watch.**



Wicket

Though it isn't often done, judges may measure if they choose. You should be familiar with the AKC Wicket procedures. Those procedures are available on the AKC Website.



Speak no Evil

Be very careful when speaking about other dogs.



Remember we all started somewhere, and we want to encourage participation in our events. Let's welcome newbies and our other friends and not make fun of those dogs we don't care for.

Depending on the circumstances, it can be a benchable offense.



The Poop Fairy is a MYTH!



Clean up after yourself. Be respectful of the few places left that allow dogs on premises.

Failure to do so, including at motels is a benchable offense.

Let's get to the show.



Watch your Ring!



Watch!

**Watch judging to see your competitor's dogs.
Look for the positives first.**



Watch!

Think about your entry. Do your best to emphasize those qualities your dog excels in.

Minimize emphasis on things that you would improve.



**If there is a breed ahead of you in the ring,
learn the ring procedure that your judge is
using.**



**You look like you don't care if you haven't taken
the time to follow or listen to their instructions.**



Pay Attention!



Stand by and be ready for Winners or Reserve if you have won a class or placed 2nd.



If you are showing more than one dog, make sure you have help available ringside to assist you.



**Don't force the judge to
regret their decision to point
to you first.**



Don't be late to the ring, **EVER!**



Here are a few **Do's**!



Have a slobber rag available to tidy up your dog's mouth.

Be respectful and listen to instructions.



Here are a few **Don'ts!**



**Don't feed your dog while the Judge
does their go-over.**



Don't glare or make negative expressions if the judge points to someone other than you.



Don't ever grab a ribbon from a judge or throw it down ringside, or put it in the trash.



**If it just wasn't your day, love your dog and
come again another day. Don't get
frustrated.**



AKC Rules and Regulations

It is important to be familiar with all the rules and regulations that apply to dog shows.

They are available online on the AKC Website. Don't depend on Social Media for a good understanding of the rules.



Professional Appearance



Clothing needs to be both age and weather appropriate.

Ladies, make sure that you can bend and stack your dog without unwittingly flashing a judge or those watching from outside the ring.



For men, suits or sport coats and ties are the most appropriate.

Inappropriate Items for ladies are:

Long or super short skirts may effect your ability to get up and down and gait your dog. Heels are dangerous.

Dangling necklaces, scarves or bracelets distract.

Excessive cleavage is inappropriate.

Slacks for women are acceptable.

Items for men are:

Tie clasps are a must as you don't want your tie dangling over your dog as you stack him.

Jingling change or keys in your pockets can be a distraction for all.





Sportsmanship & Etiquette

Inside & Outside the ring

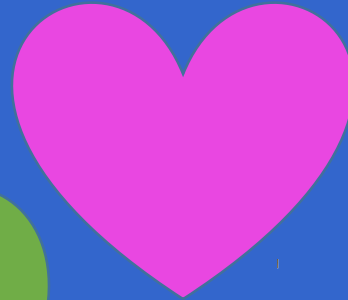


**If you have a 'difficult dog, always keep it
under control.
This means whether you are in the ring, or
out, including while crated.**





If you have a female in season, minimize her exposure to the boys.





Bark

Bark

Bark

Bark

Bark

Whine Whine Whine

Bark

Bark

Bark

Bark

Bark

Bark



**Be considerate of your
neighbors in hotel rooms,
grooming areas and
throughout your travels.**

***Most people don't realize that causing a
major disruption can be a benchable
offense.***



**Be considerate of other exhibitors.
Don't Bully and Crowd them.**





Don't run up on other exhibitors' dogs. You just might bite off more than you can chew.

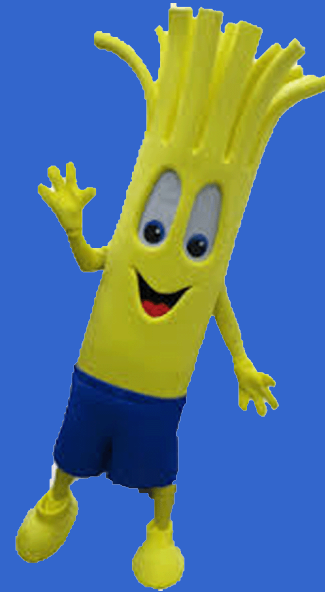
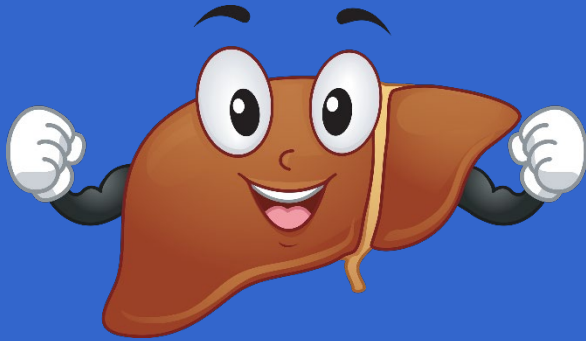
Judges as well as exhibitors don't like it. Give plenty of room.

Such tactics make you look either incompetent or a poor sport.





Don't over-bait your dog.



If you feel the need to use a small amount of bait as an encouragement for your dog, fine.



Be respectful of your competitors.



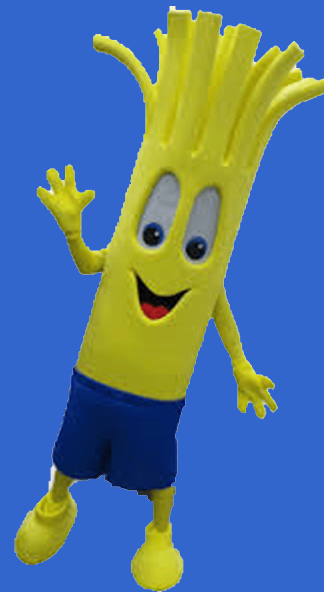
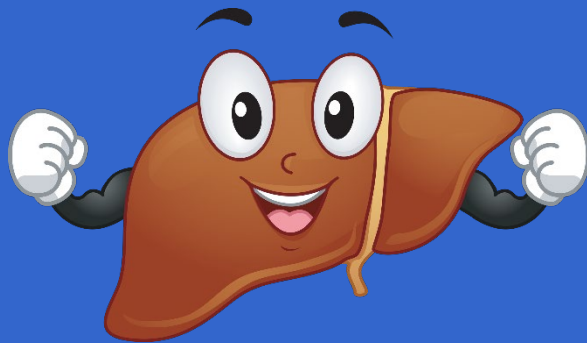
If you feel the need to use a clicker or squeaky toy, use it very sparingly.

Do not distract the other dogs.



Don't throw bait in the ring!

If you drop it, pick it up!





**We all know Basset Hounds have a
sense of humor.**



**NEVER, NEVER
Lose yours with your Basset!**



Social Media



A Blessing
and a
Curse

Regarding Show Results



When you complain about a loss you may be publicly insulting a judge and your competitor's dogs as well.



Most of us including the judges have access to social media and have a long memory regarding poor sportsmanship,



Don't demean your competitor's wins.



We all have probably won and lost a few times we shouldn't have.



Let's try to stay away from the negativity and try to encourage participation and welcome new people to a sport we love.



***Be mindful that BHCA has a social media policy.
Please stay within the guidelines!***

Acceptable



Had a great day at the show today. 'Baby Basset' went BOB from the classes!

Unacceptable



Beat so and so's dog today!

What was that judge thinking, only puts up so and so.

**Thank you very much for coming. We'll take
a ten minute break and meet ringside.**





**Exercise yourselves and
your dogs and let's meet
in the ring!**

